

Low Flow Portable Oil Filtration System

PORTABLE OIL FILTRATION SYSTEM

Oil Filtration Systems - Portable Oil Filtration Systems were developed to reduce overall operational and maintenance cost associated with contaminated hydraulic, lubrication, and dielectric oils. The end-user is able to purify a system's contaminated oil while on or off-line. These portable systems can be designed and used for oil transfer or kidney loop filtration. The systems can be equipped to remove particulate, water, and acidity at the same time in one complete system.



- Achieve low particle counts and remove water.
- Extend Oil Life.
- Increase Equipment Life.
- Reduce Equipment Down Time.
- Transfer Clean Oil to & from Drums to Reservoirs.
- Decrease fluid acid number.
- Increase fluid resistivity.
- Reduce downtime and mechanical component wear.
- Achieve high dielectric values for dielectric oils.

Our Portable Oil Filtration Systems are recommended for contaminated systems that have:

- Oils with high particle counts.
- Oils with moderate water content.
- Oils with high acid numbers.
- Oils with low resistivity.
- Oil with low dielectric values.

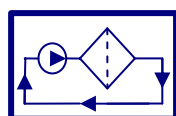
High efficiency particulate / carbon removal element - Synthetic - inert & inorganic filter media. Removes particles as small as ½ micron after one pass.

Water removal element – capable of removing up to 1-2 gallons of water.

Option acid removal elements: For the removal of acids, gums, surfactants, varnishes, soaps, color bodies, corrosive gasses, and oxidation products.

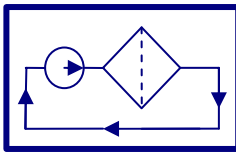
Optional flow rates and voltages: There are several flow rate options and voltages available. Flow rate options from 1-20 GPM. Standard voltage is 120.

Element plugged indication - A differential pressure gauge shows when the elements need to be changed.



OIL FILTRATION SYSTEMS, INC.

Phone: 830-816-3332
Fax: 830-816-3331
www.oilfiltrationsystems.com



Low Flow Portable Oil Filtration System

Electrical Specifications

Voltage: 120 / 240 VAC, 1 Ph, 50 or 60 Hz
or 240 / 480 VAC. 3 Ph, 50 or 60 Hz

Motors: ½ - 1.5 hp, 1725 RPM, TEFC

Control: On / Off toggle switch

Mechanical Specifications

Flow rate options from: 1 to 20 GPM

Filter Housings: 1, 2, or 3 filter vessels for particulate, water & acid removal.

Plugged element indication: Differential pressure gauges provide 40 PSID indication when the elements need to be changed.

Pump: Heavy-duty self-priming positive displacement gear pump with relief valve.

Connections: Two 12' hoses with NPT female swivel ends with plugs.

Power cord: 25' / 7.62 meter heavy gauge and high visibility yellow color.

Oil Sample Valves: (2) oil sample valves for quick & convenient oil analysis.

Approx. shipping weight: 180 lbs.

Dimensions: 28" W / 55" H / 30" D

Custom options are always available.

For technical support & application help call us at 210-344-3708.

* 820 Series are cartridge filter elements.

** 510 Series are spin-on filter elements.



SYSTEM ORDERING INFORMATION

Above Standard part-number FC-5-2/S510-120-B

**Indicates Portable Oil Filtration System
Above Example Part Number –
FC-5-S510/2-120-B, (FC-*A*-*B*-*C*-*D*)**

A 5 indicates flow rate of 5 GPM (1 to 20 GPM options
Insert desired flow rate number up to 20 GPM

B S510/2 indicates two Spin On Elements in series
Note: 2 Element options – S510 Spin On & 820X Cartridge
S510/2 indicates two Spin On Elements in parallel
2/820X indicates two 820X housings in series
820X/2 indicates two 820X housings in parallel

C 120 Indicates 120 Volts Single Phase
(Optional Voltages available 220 Volt Single Phase-
230, 460, to 515 Volts 3 Phase)

D B Indicates Buna Seals, Insert V option for Viton Seals

ELEMENT ORDERING INFORMATION

**Pleated particulate removal elements
available in 1, 3, 6, 12, & 25 micron increments.**

Example P/N: OFS-820X-3B, OFS-(*A*)-(*B*)(*C*)

A Indicates 820X Cartridge Filter – Approx. 6" Diameter X
18" Length. 2nd option is a S510 Spin-on Filter – Approx. 5"
Diameter X 10" Length

B Indicates 3 micron size, Available Options are 1, 3, 6, 12
or 25 micron @ Beta \geq 200 Absolute Efficiency

C Indicates Seals – "B" for Buna and "V" for Viton)

Water removal element P/N:

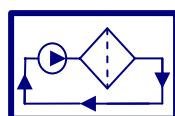
OFS-820X-WB (Cartridge)

OFS-S510-WB (Spin-on)

Acid removal element P/N: (Only for 820 Series Housings)

OFS-820-FEA (Fuller's Earth)

OFS-820-AAA (Activated Alumna)



OIL FILTRATION SYSTEMS, INC.

Phone: 830-816-3332

Fax: 830-816-3331

www.oilfiltrationsystems.com